



Test Report

No. : CE/2013/37305B Date : 2013/04/19 Page : 1 of 27

TXC CORPORATION
4F, NO. 16, SEC. 2, CHUNG YANG S. RD., PEITOU 112, TAIPEI, TAIWAN



The following sample(s) was/were submitted and identified by/on behalf of the applicant as :

Sample Description	: QUARTZ CRYSTAL UNIT (SSP-T7-F)
Sample Receiving Date	: 2013/03/27
Testing Period	: 2013/03/27 TO 2013/04/03

Test Result(s) : Please refer to next page(s).




Troy Chang, Manager Tech
Signed for and on behalf of
SGS TAIWAN LTD.
Chemical Laboratory - Taipei

This document is issued by the Company subject to its General Conditions of Service printed overleaf, available on request or accessible at <http://www.sgs.com/en/Terms-and-Conditions.aspx> and, for electronic format documents, subject to Terms and Conditions for Electronic Documents at <http://www.sgs.com/en/Terms-and-Conditions/Termse-Document.aspx>. Attention is drawn to the limitation of liability, indemnification and jurisdiction issues defined therein. Any holder of this document is advised that information contained hereon reflects the Company's findings at the time of its intervention only and within the limits of client's instruction, if any. The Company's sole responsibility is to its Client and this document does not exonerate parties to a transaction from exercising all their rights and obligations under the transaction documents. This document cannot be reproduced, except in full, without prior written approval of the Company. Any unauthorized alteration, forgery or falsification of the content or appearance of this document is unlawful and offenders may be prosecuted to the fullest extent of the law. Unless otherwise stated the results shown in this test report refer only to the sample(s) tested.

Test Report

No. : CE/2013/37305B Date : 2013/04/19 Page : 2 of 27

TXC CORPORATION
4F, NO. 16, SEC. 2, CHUNG YANG S. RD., PEITOU 112, TAIPEI, TAIWAN



Test Result(s)

PART NAME No.1 : MIXED ALL PARTS

Test Item(s)	Unit	Method	MDL	Result
				No.1
Cadmium (Cd)	mg/kg	With reference to IEC 62321: 2008 and performed by ICP-AES.	2	n.d.
Lead (Pb)	mg/kg		2	11100
Mercury (Hg)	mg/kg		2	n.d.
Hexavalent Chromium Cr(VI)	mg/kg	With reference to IEC 62321: 2008 and performed by UV-VIS.	2	n.d.
Antimony (Sb)	mg/kg	With reference to US EPA Method 3050B. Analysis was performed by ICP-AES.	2	n.d.
Beryllium (Be)	mg/kg	With reference to US EPA Method 3050B. Analysis was performed by ICP-AES.	2	n.d.
Arsenic (As)	mg/kg	With reference to US EPA Method 3052. Analysis was performed by ICP-AES.	2	n.d.
Nickel (Ni)	mg/kg	With reference to US EPA Method 3050B. Analysis was performed by ICP-AES.	2	129000
Polychlorinated Biphenyls (PCBs) (CAS No.: 1336-36-3)	mg/kg	With reference to US EPA 3540C method. Analysis was performed by GC/MS.	0.5	n.d.
Polychlorinated Naphthalene (PCNs)	mg/kg	With reference to US EPA 3540C method. Analysis was performed by GC/MS.	5	n.d.
Polychlorinated Terphenyls (PCTs)	mg/kg	With reference to US EPA 3540C method. Analysis was performed by GC/MS.	0.5	n.d.
Alkanes, C10-13, chloro (Short Chain Chlorinated Paraffins) (CAS No.: 85535-84-8)	mg/kg	With reference to US EPA 3540C method. Analysis was performed by GC/MS.	100	n.d.
Formaldehyde (CAS No.: 50-00-0)	mg/kg	With reference to ISO 17226-1(2008). Analysis was performed by HPLC/DAD.	3	n.d.
PVC	**	Analysis was performed by FTIR and FLAME Test.	-	Negative
BBP (Benzyl butyl phthalate) (CAS No.: 85-68-7)	%	With reference to EN 14372. Analysis was performed by GC/MS.	0.003	n.d.
DEHP (Di- (2-ethylhexyl) phthalate) (CAS No.: 117-81-7)	%	With reference to EN 14372. Analysis was performed by GC/MS.	0.003	n.d.

This document is issued by the Company subject to its General Conditions of Service printed overleaf, available on request or accessible at <http://www.sgs.com/en/Terms-and-Conditions.aspx> and, for electronic format documents, subject to Terms and Conditions for Electronic Documents at <http://www.sgs.com/en/Terms-and-Conditions/Term-Document.aspx>. Attention is drawn to the limitation of liability, indemnification and jurisdiction issues defined therein. Any holder of this document is advised that information contained hereon reflects the Company's findings at the time of its intervention only and within the limits of client's instruction, if any. The Company's sole responsibility is to its Client and this document does not exonerate parties to a transaction from exercising all their rights and obligations under the transaction documents. This document cannot be reproduced, except in full, without prior written approval of the Company. Any unauthorized alteration, forgery or falsification of the content or appearance of this document is unlawful and offenders may be prosecuted to the fullest extent of the law. Unless otherwise stated the results shown in this test report refer only to the sample(s) tested.

Test Report

No. : CE/2013/37305B Date : 2013/04/19 Page : 3 of 27

TXC CORPORATION

4F, NO. 16, SEC. 2, CHUNG YANG S. RD., PEITOU 112, TAIPEI, TAIWAN



Test Item(s)	Unit	Method	MDL	Result
				No.1
DIDP (Di-isodecyl phthalate) (CAS No.: 26761-40-0)	%	With reference to EN 14372. Analysis was performed by GC/MS.	0.01	n.d.
DINP (Di-isononyl phthalate) (CAS No.: 28553-12-0)	%	With reference to EN 14372. Analysis was performed by GC/MS.	0.01	n.d.
DNOP (Di-n-octyl phthalate) (CAS No.: 117-84-0)	%	With reference to EN 14372. Analysis was performed by GC/MS.	0.003	n.d.
DBP (Dibutyl phthalate) (CAS No.: 84-74-2)	%	With reference to EN 14372. Analysis was performed by GC/MS.	0.003	n.d.
Perfluorooctane sulfonates (PFOS-Acid, Metal Salt, Amide)	mg/kg	With reference to US EPA 3540C: 1996. Analysis was performed by LC/MS.	10	n.d.
PFOA (CAS No.: 335-67-1)	mg/kg		10	n.d.
Hexabromocyclododecane (HBCDD) and all major diastereoisomers identified (α - HBCDD, β - HBCDD, γ - HBCDD) (CAS No.: 25637-99-4 and 3194-55-6 (134237-51-7, 134237-50-6, 134237-52-8))	mg/kg	With reference to US EPA 3540C method. Analysis was performed by GC/MS.	5	n.d.
Bromomethane (CAS No.: 74-83-9)	mg/kg	With reference to US EPA 5021 method. Analysis was performed by GC/MS.	1	n.d.
Halogen				
Halogen-Fluorine (F) (CAS No.: 14762-94-8)	mg/kg	With reference to BS EN 14582:2007. Analysis was performed by IC.	50	n.d.
Halogen-Chlorine (Cl) (CAS No.: 22537-15-1)	mg/kg	With reference to BS EN 14582:2007. Analysis was performed by IC.	50	n.d.
Halogen-Bromine (Br) (CAS No.: 10097-32-2)	mg/kg	With reference to BS EN 14582:2007. Analysis was performed by IC.	50	n.d.
Halogen-Iodine (I) (CAS No.: 14362-44-8)	mg/kg	With reference to BS EN 14582:2007. Analysis was performed by IC.	50	n.d.
Organic-tin compounds				
Tributyl Tin (TBT)	mg/kg	With reference to DIN 38407-13. Analysis was performed by GC/FPD.	0.03	n.d.
Triphenyl Tin (TphT)	mg/kg	With reference to DIN 38407-13. Analysis was performed by GC/FPD.	0.03	n.d.

This document is issued by the Company subject to its General Conditions of Service printed overleaf, available on request or accessible at <http://www.sgs.com/en/Terms-and-Conditions.aspx> and, for electronic format documents, subject to Terms and Conditions for Electronic Documents at <http://www.sgs.com/en/Terms-and-Conditions/Termse-Document.aspx>. Attention is drawn to the limitation of liability, indemnification and jurisdiction issues defined therein. Any holder of this document is advised that information contained hereon reflects the Company's findings at the time of its intervention only and within the limits of client's instruction, if any. The Company's sole responsibility is to its Client and this document does not exonerate parties to a transaction from exercising all their rights and obligations under the transaction documents. This document cannot be reproduced, except in full, without prior written approval of the Company. Any unauthorized alteration, forgery or falsification of the content or appearance of this document is unlawful and offenders may be prosecuted to the fullest extent of the law. Unless otherwise stated the results shown in this test report refer only to the sample(s) tested.

Test Report

No. : CE/2013/37305B Date : 2013/04/19 Page : 4 of 27

TXC CORPORATION

4F, NO. 16, SEC. 2, CHUNG YANG S. RD., PEITOU 112, TAIPEI, TAIWAN



Test Item(s)	Unit	Method	MDL	Result
				No.1
Sum of PBBs	mg/kg	With reference to IEC 62321: 2008 and performed by GC/MS.	-	n.d.
Monobromobiphenyl	mg/kg		5	n.d.
Dibromobiphenyl	mg/kg		5	n.d.
Tribromobiphenyl	mg/kg		5	n.d.
Tetrabromobiphenyl	mg/kg		5	n.d.
Pentabromobiphenyl	mg/kg		5	n.d.
Hexabromobiphenyl	mg/kg		5	n.d.
Heptabromobiphenyl	mg/kg		5	n.d.
Octabromobiphenyl	mg/kg		5	n.d.
Nonabromobiphenyl	mg/kg		5	n.d.
Decabromobiphenyl	mg/kg		5	n.d.
Sum of PBDEs	mg/kg		-	n.d.
Monobromodiphenyl ether	mg/kg		5	n.d.
Dibromodiphenyl ether	mg/kg		5	n.d.
Tribromodiphenyl ether	mg/kg		5	n.d.
Tetrabromodiphenyl ether	mg/kg		5	n.d.
Pentabromodiphenyl ether	mg/kg		5	n.d.
Hexabromodiphenyl ether	mg/kg		5	n.d.
Heptabromodiphenyl ether	mg/kg		5	n.d.
Octabromodiphenyl ether	mg/kg		5	n.d.
Nonabromodiphenyl ether	mg/kg		5	n.d.
Decabromodiphenyl ether	mg/kg		5	n.d.
Asbestos				
Actinolite (CAS No.: 77536-66-4)	%	With reference to NIOSH 9000 and NIOSH 9002 method. Analysis was performed by X-ray Diffraction Spectrometer (XRD), Stereo Microscope (SM) and Dispersion Staining Polarized Light Microscope (DS-PLM).	-	Negative
Amosite (CAS No.: 12172-73-5)	%		-	Negative
Anthophyllite (CAS No.: 77536-67-5)	%		-	Negative
Chrysotile (CAS No.: 12001-29-5)	%		-	Negative
Crocidolite (CAS No.: 12001-28-4)	%		-	Negative
Tremolite (CAS No.: 77536-68-6)	%		-	Negative
AZO				
1): 4-AMINODIPHENYL (CAS No.: 92-67-1)	mg/kg	With reference to LFGB 82.02-2. Analysis was performed by GC/MS.	3	n.d.
2): BENZIDINE (CAS No.: 92-87-5)	mg/kg	With reference to LFGB 82.02-2. Analysis was performed by GC/MS.	3	n.d.
3): 4-CHLORO-O-TOLUIDINE (CAS No.: 95-69-2)	mg/kg	With reference to LFGB 82.02-2. Analysis was performed by GC/MS.	3	n.d.

This document is issued by the Company subject to its General Conditions of Service printed overleaf, available on request or accessible at <http://www.sgs.com/en/Terms-and-Conditions.aspx> and, for electronic format documents, subject to Terms and Conditions for Electronic Documents at <http://www.sgs.com/en/Terms-and-Conditions/Term-Document.aspx>. Attention is drawn to the limitation of liability, indemnification and jurisdiction issues defined therein. Any holder of this document is advised that information contained hereon reflects the Company's findings at the time of its intervention only and within the limits of client's instruction, if any. The Company's sole responsibility is to its Client and this document does not exonerate parties to a transaction from exercising all their rights and obligations under the transaction documents. This document cannot be reproduced, except in full, without prior written approval of the Company. Any unauthorized alteration, forgery or falsification of the content or appearance of this document is unlawful and offenders may be prosecuted to the fullest extent of the law. Unless otherwise stated the results shown in this test report refer only to the sample(s) tested.

Test Report

No. : CE/2013/37305B Date : 2013/04/19 Page : 5 of 27

TXC CORPORATION

4F, NO. 16, SEC. 2, CHUNG YANG S. RD., PEITOU 112, TAIPEI, TAIWAN



Test Item(s)	Unit	Method	MDL	Result
				No.1
4): 2-NAPHTHYLAMINE (CAS No.: 91-59-8)	mg/kg	With reference to LFGB 82.02-2. Analysis was performed by GC/MS.	3	n.d.
5): O-AMINOAZOTOLUENE (CAS No.: 97-56-3)	mg/kg	With reference to LFGB 82.02-2. Analysis was performed by GC/MS.	3	n.d.
6): 2-AMINO-4-NITROTOLUENE (CAS No.: 99-55-8)	mg/kg	With reference to LFGB 82.02-2. Analysis was performed by GC/MS.	3	n.d.
7): P-CHLOROANILINE (CAS No.: 106-47-8)	mg/kg	With reference to LFGB 82.02-2. Analysis was performed by GC/MS.	3	n.d.
8): 2,4-DIAMINOANISOLE (CAS No.: 615-05-4)	mg/kg	With reference to LFGB 82.02-2. Analysis was performed by GC/MS.	3	n.d.
9): 4,4'-DIAMINODIPHENYLMETHANE (CAS No.: 101-77-9)	mg/kg	With reference to LFGB 82.02-2. Analysis was performed by GC/MS.	3	n.d.
10): 3,3'-DICHLOROBENZIDINE (CAS No.: 91-94-1)	mg/kg	With reference to LFGB 82.02-2. Analysis was performed by GC/MS.	3	n.d.
11): 3,3'-DIMETHOXYBENZIDINE (CAS No.: 119-90-4)	mg/kg	With reference to LFGB 82.02-2. Analysis was performed by GC/MS.	3	n.d.
12): 3,3'-DIMETHYLBENZIDINE (CAS No.: 119-93-7)	mg/kg	With reference to LFGB 82.02-2. Analysis was performed by GC/MS.	3	n.d.
13): 3,3'-DIMETHYL-4,4'-DIAMINODIPHENYLMETHANE (CAS No.: 838-88-0)	mg/kg	With reference to LFGB 82.02-2. Analysis was performed by GC/MS.	3	n.d.
14): P-CRESIDINE (2-METHOXY-5-METHYLANILINE) (CAS No.: 120-71-8)	mg/kg	With reference to LFGB 82.02-2. Analysis was performed by GC/MS.	3	n.d.
15): 4,4'-METHYLENE-BIS-(2-CHLOROANILINE) (CAS No.: 101-14-4)	mg/kg	With reference to LFGB 82.02-2. Analysis was performed by GC/MS.	3	n.d.
16): 4,4'-OXYDIANILINE (CAS No.: 101-80-4)	mg/kg	With reference to LFGB 82.02-2. Analysis was performed by GC/MS.	3	n.d.
17): 4,4'-THIODIANILINE (CAS No.: 139-65-1)	mg/kg	With reference to LFGB 82.02-2. Analysis was performed by GC/MS.	3	n.d.
18): O-TOLUIDINE (CAS No.: 95-53-4)	mg/kg	With reference to LFGB 82.02-2. Analysis was performed by GC/MS.	3	n.d.
19): 2,4-TOLUYLENEDIAMINE (CAS No.: 95-80-7)	mg/kg	With reference to LFGB 82.02-2. Analysis was performed by GC/MS.	3	n.d.

This document is issued by the Company subject to its General Conditions of Service printed overleaf, available on request or accessible at <http://www.sgs.com/en/Terms-and-Conditions.aspx> and, for electronic format documents, subject to Terms and Conditions for Electronic Documents at <http://www.sgs.com/en/Terms-and-Conditions/Term-Document.aspx>. Attention is drawn to the limitation of liability, indemnification and jurisdiction issues defined therein. Any holder of this document is advised that information contained hereon reflects the Company's findings at the time of its intervention only and within the limits of client's instruction, if any. The Company's sole responsibility is to its Client and this document does not exonerate parties to a transaction from exercising all their rights and obligations under the transaction documents. This document cannot be reproduced, except in full, without prior written approval of the Company. Any unauthorized alteration, forgery or falsification of the content or appearance of this document is unlawful and offenders may be prosecuted to the fullest extent of the law. Unless otherwise stated the results shown in this test report refer only to the sample(s) tested.

Test Report

No. : CE/2013/37305B Date : 2013/04/19 Page : 6 of 27

TXC CORPORATION

4F, NO. 16, SEC. 2, CHUNG YANG S. RD., PEITOU 112, TAIPEI, TAIWAN



Test Item(s)	Unit	Method	MDL	Result
				No.1
20): 2,4,5-TRIMETHYLANILINE (CAS No.: 137-17-7)	mg/kg	With reference to LFGB 82.02-2. Analysis was performed by GC/MS.	3	n.d.
21): O-ANISIDINE (CAS No.: 90-04-0)	mg/kg	With reference to LFGB 82.02-2. Analysis was performed by GC/MS.	3	n.d.
22): 4-AMINOAZOBENZENE (CAS No.: 60-09-3)	mg/kg	With reference to LFGB 82.02-2. Analysis was performed by GC/MS.	3	n.d.
23): 2,4-XYLIDINE (CAS No.: 95-68-1)	mg/kg	With reference to LFGB 82.02-2. Analysis was performed by GC/MS.	3	n.d.
24): 2,6-XYLIDINE (CAS No.: 87-62-7)	mg/kg	With reference to LFGB 82.02-2. Analysis was performed by GC/MS.	3	n.d.
CFC's (Chlorofluorocarbons)				
Group I				
Chlorofluorocarbon-11 (CAS No.: 75-69-4)	mg/kg	With reference to US EPA 5021 method. Analysis was performed by GC/MS.	1	n.d.
Chlorofluorocarbon-12 (CAS No.: 75-71-8)	mg/kg	With reference to US EPA 5021 method. Analysis was performed by GC/MS.	1	n.d.
Chlorofluorocarbon-113 (CAS No.: 76-13-1)	mg/kg	With reference to US EPA 5021 method. Analysis was performed by GC/MS.	1	n.d.
Chlorofluorocarbon-114 (CAS No.: 76-14-2)	mg/kg	With reference to US EPA 5021 method. Analysis was performed by GC/MS.	1	n.d.
Chlorofluorocarbon-115 (CAS No.: 76-15-3)	mg/kg	With reference to US EPA 5021 method. Analysis was performed by GC/MS.	1	n.d.
Group III				
Chlorofluorocarbon-13 (CAS No.: 75-72-9)	mg/kg	With reference to US EPA 5021 method. Analysis was performed by GC/MS.	1	n.d.
Chlorofluorocarbon-111 (CAS No.: 354-56-3)	mg/kg	With reference to US EPA 5021 method. Analysis was performed by GC/MS.	1	n.d.
Chlorofluorocarbon-112 (CAS No.: 76-12-0)	mg/kg	With reference to US EPA 5021 method. Analysis was performed by GC/MS.	1	n.d.
Chlorofluorocarbon-211 (CAS No.: 422-78-6)	mg/kg	With reference to US EPA 5021 method. Analysis was performed by GC/MS.	1	n.d.
Chlorofluorocarbon-212 (CAS No.: 3182-26-1)	mg/kg	With reference to US EPA 5021 method. Analysis was performed by GC/MS.	1	n.d.
Chlorofluorocarbon-213 (CAS No.: 2354-06-5)	mg/kg	With reference to US EPA 5021 method. Analysis was performed by GC/MS.	1	n.d.

This document is issued by the Company subject to its General Conditions of Service printed overleaf, available on request or accessible at <http://www.sgs.com/en/Terms-and-Conditions.aspx> and, for electronic format documents, subject to Terms and Conditions for Electronic Documents at <http://www.sgs.com/en/Terms-and-Conditions/Termse-Documents.aspx>. Attention is drawn to the limitation of liability, indemnification and jurisdiction issues defined therein. Any holder of this document is advised that information contained hereon reflects the Company's findings at the time of its intervention only and within the limits of client's instruction, if any. The Company's sole responsibility is to its Client and this document does not exonerate parties to a transaction from exercising all their rights and obligations under the transaction documents. This document cannot be reproduced, except in full, without prior written approval of the Company. Any unauthorized alteration, forgery or falsification of the content or appearance of this document is unlawful and offenders may be prosecuted to the fullest extent of the law. Unless otherwise stated the results shown in this test report refer only to the sample(s) tested.

Test Report

No. : CE/2013/37305B Date : 2013/04/19 Page : 7 of 27

TXC CORPORATION

4F, NO. 16, SEC. 2, CHUNG YANG S. RD., PEITOU 112, TAIPEI, TAIWAN



Test Item(s)	Unit	Method	MDL	Result
				No.1
Chlorofluorocarbon-214 (CAS No.: 29255-31-0)	mg/kg	With reference to US EPA 5021 method. Analysis was performed by GC/MS.	1	n.d.
Chlorofluorocarbon-215 (CAS No.: 4259-43-2)	mg/kg	With reference to US EPA 5021 method. Analysis was performed by GC/MS.	1	n.d.
Chlorofluorocarbon-216 (CAS No.: 661-97-2)	mg/kg	With reference to US EPA 5021 method. Analysis was performed by GC/MS.	1	n.d.
Chlorofluorocarbon-217 (CAS No.: 422-86-6)	mg/kg	With reference to US EPA 5021 method. Analysis was performed by GC/MS.	1	n.d.
HCFCs (Hydrochlorofluorocarbons)				
HCFC-21 (CAS No.: 75-43-4)	mg/kg	With reference to US EPA 5021 method. Analysis was performed by GC/MS.	1	n.d.
HCFC-22 (CAS No.: 75-45-6)	mg/kg	With reference to US EPA 5021 method. Analysis was performed by GC/MS.	1	n.d.
HCFC-31 (CAS No.: 593-70-4)	mg/kg	With reference to US EPA 5021 method. Analysis was performed by GC/MS.	1	n.d.
HCFC-121 (CAS No.: 354-14-3)	mg/kg	With reference to US EPA 5021 method. Analysis was performed by GC/MS.	1	n.d.
HCFC-122 (CAS No.: 354-21-2)	mg/kg	With reference to US EPA 5021 method. Analysis was performed by GC/MS.	1	n.d.
HCFC-123 (CAS No.: 306-83-2)	mg/kg	With reference to US EPA 5021 method. Analysis was performed by GC/MS.	1	n.d.
HCFC-124 (CAS No.: 2837-89-0)	mg/kg	With reference to US EPA 5021 method. Analysis was performed by GC/MS.	1	n.d.
HCFC-131 (CAS No.: 359-28-4)	mg/kg	With reference to US EPA 5021 method. Analysis was performed by GC/MS.	1	n.d.
HCFC-132b (CAS No.: 1649-08-7)	mg/kg	With reference to US EPA 5021 method. Analysis was performed by GC/MS.	1	n.d.
HCFC-133a (CAS No.: 75-88-7)	mg/kg	With reference to US EPA 5021 method. Analysis was performed by GC/MS.	1	n.d.
HCFC-141b (CAS No.: 1717-00-6)	mg/kg	With reference to US EPA 5021 method. Analysis was performed by GC/MS.	1	n.d.
HCFC-142b (CAS No.: 75-68-3)	mg/kg	With reference to US EPA 5021 method. Analysis was performed by GC/MS.	1	n.d.
HCFC-221 (CAS No.: 422-26-4)	mg/kg	With reference to US EPA 5021 method. Analysis was performed by GC/MS.	1	n.d.

This document is issued by the Company subject to its General Conditions of Service printed overleaf, available on request or accessible at <http://www.sgs.com/en/Terms-and-Conditions.aspx> and, for electronic format documents, subject to Terms and Conditions for Electronic Documents at <http://www.sgs.com/en/Terms-and-Conditions/Termse-Document.aspx>. Attention is drawn to the limitation of liability, indemnification and jurisdiction issues defined therein. Any holder of this document is advised that information contained hereon reflects the Company's findings at the time of its intervention only and within the limits of client's instruction, if any. The Company's sole responsibility is to its Client and this document does not exonerate parties to a transaction from exercising all their rights and obligations under the transaction documents. This document cannot be reproduced, except in full, without prior written approval of the Company. Any unauthorized alteration, forgery or falsification of the content or appearance of this document is unlawful and offenders may be prosecuted to the fullest extent of the law. Unless otherwise stated the results shown in this test report refer only to the sample(s) tested.

Test Report

No. : CE/2013/37305B Date : 2013/04/19 Page : 8 of 27

TXC CORPORATION

4F, NO. 16, SEC. 2, CHUNG YANG S. RD., PEITOU 112, TAIPEI, TAIWAN



Test Item(s)	Unit	Method	MDL	Result
				No.1
HCFC-222 (CAS No.: 422-49-1)	mg/kg	With reference to US EPA 5021 method. Analysis was performed by GC/MS.	1	n.d.
HCFC-223 (CAS No.: 422-52-6)	mg/kg	With reference to US EPA 5021 method. Analysis was performed by GC/MS.	1	n.d.
HCFC-224 (CAS No.: 422-54-8)	mg/kg	With reference to US EPA 5021 method. Analysis was performed by GC/MS.	1	n.d.
HCFC-225ca (CAS No.: 422-56-0)	mg/kg	With reference to US EPA 5021 method. Analysis was performed by GC/MS.	1	n.d.
HCFC-225cb (CAS No.: 507-55-1)	mg/kg	With reference to US EPA 5021 method. Analysis was performed by GC/MS.	1	n.d.
HCFC-226 (CAS No.: 431-87-8)	mg/kg	With reference to US EPA 5021 method. Analysis was performed by GC/MS.	1	n.d.
HCFC-231 (CAS No.: 421-94-3)	mg/kg	With reference to US EPA 5021 method. Analysis was performed by GC/MS.	1	n.d.
HCFC-232 (CAS No.: 460-89-9)	mg/kg	With reference to US EPA 5021 method. Analysis was performed by GC/MS.	1	n.d.
HCFC-233 (CAS No.: 7125-84-0)	mg/kg	With reference to US EPA 5021 method. Analysis was performed by GC/MS.	1	n.d.
HCFC-234 (CAS No.: 425-94-5)	mg/kg	With reference to US EPA 5021 method. Analysis was performed by GC/MS.	1	n.d.
HCFC-235 (CAS No.: 460-92-4)	mg/kg	With reference to US EPA 5021 method. Analysis was performed by GC/MS.	1	n.d.
HCFC-241 (CAS No.: 666-27-3)	mg/kg	With reference to US EPA 5021 method. Analysis was performed by GC/MS.	1	n.d.
HCFC-242 (CAS No.: 460-63-9)	mg/kg	With reference to US EPA 5021 method. Analysis was performed by GC/MS.	1	n.d.
HCFC-243 (CAS No.: 460-69-5)	mg/kg	With reference to US EPA 5021 method. Analysis was performed by GC/MS.	1	n.d.
HCFC-244	mg/kg	With reference to US EPA 5021 method. Analysis was performed by GC/MS.	1	n.d.
HCFC-251 (CAS No.: 421-41-0)	mg/kg	With reference to US EPA 5021 method. Analysis was performed by GC/MS.	1	n.d.
HCFC-252 (CAS No.: 819-00-1)	mg/kg	With reference to US EPA 5021 method. Analysis was performed by GC/MS.	1	n.d.

This document is issued by the Company subject to its General Conditions of Service printed overleaf, available on request or accessible at <http://www.sgs.com/en/Terms-and-Conditions.aspx> and, for electronic format documents, subject to Terms and Conditions for Electronic Documents at <http://www.sgs.com/en/Terms-and-Conditions/Term-Document.aspx>. Attention is drawn to the limitation of liability, indemnification and jurisdiction issues defined therein. Any holder of this document is advised that information contained hereon reflects the Company's findings at the time of its intervention only and within the limits of client's instruction, if any. The Company's sole responsibility is to its Client and this document does not exonerate parties to a transaction from exercising all their rights and obligations under the transaction documents. This document cannot be reproduced, except in full, without prior written approval of the Company. Any unauthorized alteration, forgery or falsification of the content or appearance of this document is unlawful and offenders may be prosecuted to the fullest extent of the law. Unless otherwise stated the results shown in this test report refer only to the sample(s) tested.

Test Report

No. : CE/2013/37305B Date : 2013/04/19 Page : 9 of 27

TXC CORPORATION

4F, NO. 16, SEC. 2, CHUNG YANG S. RD., PEITOU 112, TAIPEI, TAIWAN



Test Item(s)	Unit	Method	MDL	Result
				No.1
HCFC-253 (CAS No.: 460-35-5)	mg/kg	With reference to US EPA 5021 method. Analysis was performed by GC/MS.	1	n.d.
HCFC-261 (CAS No.: 420-97-3)	mg/kg	With reference to US EPA 5021 method. Analysis was performed by GC/MS.	1	n.d.
HCFC-262 (CAS No.: 421-02-03)	mg/kg	With reference to US EPA 5021 method. Analysis was performed by GC/MS.	1	n.d.
HCFC-271 (CAS No.: 430-55-7)	mg/kg	With reference to US EPA 5021 method. Analysis was performed by GC/MS.	1	n.d.
Halons				
Halon-1211 (CAS No.: 353-59-3)	mg/kg	With reference to US EPA 5021 method. Analysis was performed by GC/MS.	1	n.d.
Halon-1301 (CAS No.: 75-63-8)	mg/kg	With reference to US EPA 5021 method. Analysis was performed by GC/MS.	1	n.d.
Halon-2402 (CAS No.: 124-73-2)	mg/kg	With reference to US EPA 5021 method. Analysis was performed by GC/MS.	1	n.d.
HBFCs (Hydrobromofluorocarbons)				
HBFC-21B2 (CHFBr ₂) (CAS No.: 1868-53-7)	mg/kg	With reference to US EPA 5021 method. Analysis was performed by GC/MS.	1	n.d.
HBFC-22B1 (CHF ₂ Br) (CAS No.: 1511-62-2)	mg/kg	With reference to US EPA 5021 method. Analysis was performed by GC/MS.	1	n.d.
HBFC-31B1 (CH ₂ FBr) (CAS No.: 373-52-4)	mg/kg	With reference to US EPA 5021 method. Analysis was performed by GC/MS.	1	n.d.
HBFC-121B4 (C ₂ HFBr ₄)	mg/kg	With reference to US EPA 5021 method. Analysis was performed by GC/MS.	1	n.d.
HBFC-122B3 (C ₂ HF ₂ Br ₃)	mg/kg	With reference to US EPA 5021 method. Analysis was performed by GC/MS.	1	n.d.
HBFC-123B2 (C ₂ HF ₃ Br ₂)	mg/kg	With reference to US EPA 5021 method. Analysis was performed by GC/MS.	1	n.d.
HBFC-124B1 (C ₂ HF ₄ Br)	mg/kg	With reference to US EPA 5021 method. Analysis was performed by GC/MS.	1	n.d.
HBFC-131B3 (C ₂ H ₂ FBr ₃)	mg/kg	With reference to US EPA 5021 method. Analysis was performed by GC/MS.	1	n.d.
HBFC-132B2 (C ₂ H ₂ F ₂ Br ₂)	mg/kg	With reference to US EPA 5021 method. Analysis was performed by GC/MS.	1	n.d.

This document is issued by the Company subject to its General Conditions of Service printed overleaf, available on request or accessible at <http://www.sgs.com/en/Terms-and-Conditions.aspx> and, for electronic format documents, subject to Terms and Conditions for Electronic Documents at <http://www.sgs.com/en/Terms-and-Conditions/Term-Document.aspx>. Attention is drawn to the limitation of liability, indemnification and jurisdiction issues defined therein. Any holder of this document is advised that information contained hereon reflects the Company's findings at the time of its intervention only and within the limits of client's instruction, if any. The Company's sole responsibility is to its Client and this document does not exonerate parties to a transaction from exercising all their rights and obligations under the transaction documents. This document cannot be reproduced, except in full, without prior written approval of the Company. Any unauthorized alteration, forgery or falsification of the content or appearance of this document is unlawful and offenders may be prosecuted to the fullest extent of the law. Unless otherwise stated the results shown in this test report refer only to the sample(s) tested.

Test Report

No. : CE/2013/37305B Date : 2013/04/19 Page : 10 of 27

TXC CORPORATION

4F, NO. 16, SEC. 2, CHUNG YANG S. RD., PEITOU 112, TAIPEI, TAIWAN



Test Item(s)	Unit	Method	MDL	Result
				No.1
HBFC-133B1 (C2H2F3Br)	mg/kg	With reference to US EPA 5021 method. Analysis was performed by GC/MS.	1	n.d.
HBFC-141B2 (C2H3FBr2)	mg/kg	With reference to US EPA 5021 method. Analysis was performed by GC/MS.	1	n.d.
HBFC-142B1 (C2H3F2Br)	mg/kg	With reference to US EPA 5021 method. Analysis was performed by GC/MS.	1	n.d.
HBFC-151B1 (C2H4FBr)	mg/kg	With reference to US EPA 5021 method. Analysis was performed by GC/MS.	1	n.d.
HBFC-221B6 (C3HFBr6)	mg/kg	With reference to US EPA 5021 method. Analysis was performed by GC/MS.	1	n.d.
HBFC-222B5 (C3HF2Br5)	mg/kg	With reference to US EPA 5021 method. Analysis was performed by GC/MS.	1	n.d.
HBFC-223B4 (C3HF3Br4)	mg/kg	With reference to US EPA 5021 method. Analysis was performed by GC/MS.	1	n.d.
HBFC-224B3 (C3HF4Br3)	mg/kg	With reference to US EPA 5021 method. Analysis was performed by GC/MS.	1	n.d.
HBFC-225B2 (C3HF5Br2)	mg/kg	With reference to US EPA 5021 method. Analysis was performed by GC/MS.	1	n.d.
HBFC-226B1 (C3HF6Br)	mg/kg	With reference to US EPA 5021 method. Analysis was performed by GC/MS.	1	n.d.
HBFC-231B5 (C3H2FBr5)	mg/kg	With reference to US EPA 5021 method. Analysis was performed by GC/MS.	1	n.d.
HBFC-232B4 (C3H2F2Br4)	mg/kg	With reference to US EPA 5021 method. Analysis was performed by GC/MS.	1	n.d.
HBFC-233B3 (C3H2F3Br3)	mg/kg	With reference to US EPA 5021 method. Analysis was performed by GC/MS.	1	n.d.
HBFC-234B2 (C3H2F4Br2)	mg/kg	With reference to US EPA 5021 method. Analysis was performed by GC/MS.	1	n.d.
HBFC-235B1 (C3H2F5Br)	mg/kg	With reference to US EPA 5021 method. Analysis was performed by GC/MS.	1	n.d.
HBFC-241B4 (C3H3FBr4)	mg/kg	With reference to US EPA 5021 method. Analysis was performed by GC/MS.	1	n.d.
HBFC-242B3 (C3H3F2Br3)	mg/kg	With reference to US EPA 5021 method. Analysis was performed by GC/MS.	1	n.d.

This document is issued by the Company subject to its General Conditions of Service printed overleaf, available on request or accessible at <http://www.sgs.com/en/Terms-and-Conditions.aspx> and, for electronic format documents, subject to Terms and Conditions for Electronic Documents at <http://www.sgs.com/en/Terms-and-Conditions/Term-Document.aspx>. Attention is drawn to the limitation of liability, indemnification and jurisdiction issues defined therein. Any holder of this document is advised that information contained hereon reflects the Company's findings at the time of its intervention only and within the limits of client's instruction, if any. The Company's sole responsibility is to its Client and this document does not exonerate parties to a transaction from exercising all their rights and obligations under the transaction documents. This document cannot be reproduced, except in full, without prior written approval of the Company. Any unauthorized alteration, forgery or falsification of the content or appearance of this document is unlawful and offenders may be prosecuted to the fullest extent of the law. Unless otherwise stated the results shown in this test report refer only to the sample(s) tested.

Test Report

No. : CE/2013/37305B Date : 2013/04/19 Page : 11 of 27

TXC CORPORATION

4F, NO. 16, SEC. 2, CHUNG YANG S. RD., PEITOU 112, TAIPEI, TAIWAN



Test Item(s)	Unit	Method	MDL	Result
				No.1
HBFC-243B2 (C3H3F3Br2)	mg/kg	With reference to US EPA 5021 method. Analysis was performed by GC/MS.	1	n.d.
HBFC-244B1 (C3H3F4Br)	mg/kg	With reference to US EPA 5021 method. Analysis was performed by GC/MS.	1	n.d.
HBFC-251B3 (C3H4FBr3)	mg/kg	With reference to US EPA 5021 method. Analysis was performed by GC/MS.	1	n.d.
HBFC-252B2 (C3H4F2Br2)	mg/kg	With reference to US EPA 5021 method. Analysis was performed by GC/MS.	1	n.d.
HBFC-253B1 (C3H4F3Br)	mg/kg	With reference to US EPA 5021 method. Analysis was performed by GC/MS.	1	n.d.
HBFC-261B2 (C3H5FBr2)	mg/kg	With reference to US EPA 5021 method. Analysis was performed by GC/MS.	1	n.d.
HBFC-262B1 (C3H5F2Br)	mg/kg	With reference to US EPA 5021 method. Analysis was performed by GC/MS.	1	n.d.
HBFC-271B1 (C3H6FBr)	mg/kg	With reference to US EPA 5021 method. Analysis was performed by GC/MS.	1	n.d.
HFCs (Hydrofluorocarbon)				
HFC-23 (CHF3) (CAS No.: 75-46-7)	mg/kg	With reference to US EPA 5021 method. Analysis was performed by GC/MS.	1	n.d.
HFC-32 (CH2F2) (CAS No.: 75-10-5)	mg/kg	With reference to US EPA 5021 method. Analysis was performed by GC/MS.	1	n.d.
HFC-41 (CH3F) (CAS No.: 593-53-3)	mg/kg	With reference to US EPA 5021 method. Analysis was performed by GC/MS.	1	n.d.
HFC-43-10mee (C5H2F10)	mg/kg	With reference to US EPA 5021 method. Analysis was performed by GC/MS.	1	n.d.
HFC-125 (C2HF5)	mg/kg	With reference to US EPA 5021 method. Analysis was performed by GC/MS.	1	n.d.
HFC-134 (C2H2F4)	mg/kg	With reference to US EPA 5021 method. Analysis was performed by GC/MS.	1	n.d.
HFC-134a (CH2FCF3) (CAS No.: 811-97-2)	mg/kg	With reference to US EPA 5021 method. Analysis was performed by GC/MS.	1	n.d.
HFC-143 (CH3F3)	mg/kg	With reference to US EPA 5021 method. Analysis was performed by GC/MS.	1	n.d.
HFC-143a (CH3F3)	mg/kg	With reference to US EPA 5021 method. Analysis was performed by GC/MS.	1	n.d.

This document is issued by the Company subject to its General Conditions of Service printed overleaf, available on request or accessible at <http://www.sgs.com/en/Terms-and-Conditions.aspx> and, for electronic format documents, subject to Terms and Conditions for Electronic Documents at <http://www.sgs.com/en/Terms-and-Conditions/Termse-Document.aspx>. Attention is drawn to the limitation of liability, indemnification and jurisdiction issues defined therein. Any holder of this document is advised that information contained hereon reflects the Company's findings at the time of its intervention only and within the limits of client's instruction, if any. The Company's sole responsibility is to its Client and this document does not exonerate parties to a transaction from exercising all their rights and obligations under the transaction documents. This document cannot be reproduced, except in full, without prior written approval of the Company. Any unauthorized alteration, forgery or falsification of the content or appearance of this document is unlawful and offenders may be prosecuted to the fullest extent of the law. Unless otherwise stated the results shown in this test report refer only to the sample(s) tested.

Test Report

No. : CE/2013/37305B Date : 2013/04/19 Page : 12 of 27

TXC CORPORATION

4F, NO. 16, SEC. 2, CHUNG YANG S. RD., PEITOU 112, TAIPEI, TAIWAN



Test Item(s)	Unit	Method	MDL	Result
				No.1
HFC-152a (C2H4F2) (CAS No.: 75-37-6)	mg/kg	With reference to US EPA 5021 method. Analysis was performed by GC/MS.	1	n.d.
HFC-227ea (C3HF7) (CAS No.: 431-89-0)	mg/kg	With reference to US EPA 5021 method. Analysis was performed by GC/MS.	1	n.d.
HFC-236fa (C3H2F6)	mg/kg	With reference to US EPA 5021 method. Analysis was performed by GC/MS.	1	n.d.
HFC-236ea (C3H2F6) (CAS No.: 431-63-0)	mg/kg	With reference to US EPA 5021 method. Analysis was performed by GC/MS.	1	n.d.
HFC-245ca (C3H3F5)	mg/kg	With reference to US EPA 5021 method. Analysis was performed by GC/MS.	1	n.d.
HFC-245fa (C3H3F5)	mg/kg	With reference to US EPA 5021 method. Analysis was performed by GC/MS.	1	n.d.
HFC-365mfc (C4H5F5)	mg/kg	With reference to US EPA 5021 method. Analysis was performed by GC/MS.	1	n.d.
PFCs (Perfluorocarbon)				
F14 (CAS No.: 75-73-0)	mg/kg	With reference to US EPA 5021 method. Analysis was performed by GC/MS.	1	n.d.
Fluorocarbon 116 (CAS No.: 76-16-4)	mg/kg	With reference to US EPA 5021 method. Analysis was performed by GC/MS.	1	n.d.
Freon 218 (CAS No.: 76-19-7)	mg/kg	With reference to US EPA 5021 method. Analysis was performed by GC/MS.	1	n.d.
Decafluorobutane (CAS No.: 355-25-9)	mg/kg	With reference to US EPA 5021 method. Analysis was performed by GC/MS.	1	n.d.
Freon C318 (CAS No.: 115-25-3)	mg/kg	With reference to US EPA 5021 method. Analysis was performed by GC/MS.	1	n.d.
Perfluor-1-butene (CAS No.: 357-26-6)	mg/kg	With reference to US EPA 5021 method. Analysis was performed by GC/MS.	1	n.d.
perfluorisobutene (CAS No.: 382-21-8)	mg/kg	With reference to US EPA 5021 method. Analysis was performed by GC/MS.	1	n.d.
1,4-dihydrooctafluorobutane (CAS No.: 377-36-6)	mg/kg	With reference to US EPA 5021 method. Analysis was performed by GC/MS.	1	n.d.
Nonafluor-2- (trifluoromethyl) butane (CAS No.: 594-91-2)	mg/kg	With reference to US EPA 5021 method. Analysis was performed by GC/MS.	1	n.d.
Perfluoro-n-pentane (CAS No.: 678-26-2)	mg/kg	With reference to US EPA 5021 method. Analysis was performed by GC/MS.	1	n.d.

This document is issued by the Company subject to its General Conditions of Service printed overleaf, available on request or accessible at <http://www.sgs.com/en/Terms-and-Conditions.aspx> and, for electronic format documents, subject to Terms and Conditions for Electronic Documents at <http://www.sgs.com/en/Terms-and-Conditions/Termse-Document.aspx>. Attention is drawn to the limitation of liability, indemnification and jurisdiction issues defined therein. Any holder of this document is advised that information contained hereon reflects the Company's findings at the time of its intervention only and within the limits of client's instruction, if any. The Company's sole responsibility is to its Client and this document does not exonerate parties to a transaction from exercising all their rights and obligations under the transaction documents. This document cannot be reproduced, except in full, without prior written approval of the Company. Any unauthorized alteration, forgery or falsification of the content or appearance of this document is unlawful and offenders may be prosecuted to the fullest extent of the law. Unless otherwise stated the results shown in this test report refer only to the sample(s) tested.

Test Report

No. : CE/2013/37305B Date : 2013/04/19 Page : 13 of 27

TXC CORPORATION

4F, NO. 16, SEC. 2, CHUNG YANG S. RD., PEITOU 112, TAIPEI, TAIWAN



Test Item(s)	Unit	Method	MDL	Result
				No.1
2-perfluoromethylpentane (CAS No.: 355-04-4)	mg/kg	With reference to US EPA 5021 method. Analysis was performed by GC/MS.	1	n.d.
Perfluorohexane (CAS No.: 355-42-0)	mg/kg	With reference to US EPA 5021 method. Analysis was performed by GC/MS.	1	n.d.
CHCs (Chlorinate hydrocarbon)				
1,1,1,2-Tetrachloroethane (CAS No.: 630-20-6)	mg/kg	With reference to US EPA 5021 method. Analysis was performed by GC/MS.	1	n.d.
1,1,1-Trichloroethane (CAS No.: 71-55-6)	mg/kg	With reference to US EPA 5021 method. Analysis was performed by GC/MS.	1	n.d.
1,1,2,2-Tetrachloroethane (CAS No.: 79-34-5)	mg/kg	With reference to US EPA 5021 method. Analysis was performed by GC/MS.	1	n.d.
1,1,2-Trichloroethane (CAS No.: 79-00-5)	mg/kg	With reference to US EPA 5021 method. Analysis was performed by GC/MS.	1	n.d.
1,1-Dichloroethane (CAS No.: 75-34-3)	mg/kg	With reference to US EPA 5021 method. Analysis was performed by GC/MS.	1	n.d.
1,1-Dichloroethene (CAS No.: 75-35-4)	mg/kg	With reference to US EPA 5021 method. Analysis was performed by GC/MS.	1	n.d.
1,1-Dichloropropene (CAS No.: 563-58-6)	mg/kg	With reference to US EPA 5021 method. Analysis was performed by GC/MS.	1	n.d.
1,2,3-Trichloropropane (CAS No.: 96-18-4)	mg/kg	With reference to US EPA 5021 method. Analysis was performed by GC/MS.	1	n.d.
1,2-Dichloroethane (CAS No.: 107-06-2)	mg/kg	With reference to US EPA 5021 method. Analysis was performed by GC/MS.	1	n.d.
1,2-Dichloropropane (CAS No.: 78-87-5)	mg/kg	With reference to US EPA 5021 method. Analysis was performed by GC/MS.	1	n.d.
1,3-Dichloropropane (CAS No.: 142-28-9)	mg/kg	With reference to US EPA 5021 method. Analysis was performed by GC/MS.	1	n.d.
2,2-Dichloropropane (CAS No.: 594-20-7)	mg/kg	With reference to US EPA 5021 method. Analysis was performed by GC/MS.	1	n.d.
Carbon tetrachloride (CAS No.: 56-23-5)	mg/kg	With reference to US EPA 5021 method. Analysis was performed by GC/MS.	1	n.d.
Chloroethane (CAS No.: 75-00-3)	mg/kg	With reference to US EPA 5021 method. Analysis was performed by GC/MS.	1	n.d.
Chloroform (CAS No.: 67-66-3)	mg/kg	With reference to US EPA 5021 method. Analysis was performed by GC/MS.	1	n.d.

This document is issued by the Company subject to its General Conditions of Service printed overleaf, available on request or accessible at <http://www.sgs.com/en/Terms-and-Conditions.aspx> and, for electronic format documents, subject to Terms and Conditions for Electronic Documents at <http://www.sgs.com/en/Terms-and-Conditions/Termse-Document.aspx>. Attention is drawn to the limitation of liability, indemnification and jurisdiction issues defined therein. Any holder of this document is advised that information contained hereon reflects the Company's findings at the time of its intervention only and within the limits of client's instruction, if any. The Company's sole responsibility is to its Client and this document does not exonerate parties to a transaction from exercising all their rights and obligations under the transaction documents. This document cannot be reproduced, except in full, without prior written approval of the Company. Any unauthorized alteration, forgery or falsification of the content or appearance of this document is unlawful and offenders may be prosecuted to the fullest extent of the law. Unless otherwise stated the results shown in this test report refer only to the sample(s) tested.

Test Report

No. : CE/2013/37305B Date : 2013/04/19 Page : 14 of 27

TXC CORPORATION

4F, NO. 16, SEC. 2, CHUNG YANG S. RD., PEITOU 112, TAIPEI, TAIWAN



Test Item(s)	Unit	Method	MDL	Result
				No.1
Chloromethane (CAS No.: 74-87-3)	mg/kg	With reference to US EPA 5021 method. Analysis was performed by GC/MS.	1	n.d.
cis-1,2-Dichloroethene (CAS No.: 156-59-2)	mg/kg	With reference to US EPA 5021 method. Analysis was performed by GC/MS.	1	n.d.
cis-1,3-Dichloropropene (CAS No.: 10061-01-5)	mg/kg	With reference to US EPA 5021 method. Analysis was performed by GC/MS.	1	n.d.
Hexachlorobutadiene (CAS No.: 87-68-3)	mg/kg	With reference to US EPA 5021 method. Analysis was performed by GC/MS.	1	n.d.
Methylene Chloride (CAS No.: 75-09-2)	mg/kg	With reference to US EPA 5021 method. Analysis was performed by GC/MS.	1	n.d.
Tetrachloroethene (CAS No.: 127-18-4)	mg/kg	With reference to US EPA 5021 method. Analysis was performed by GC/MS.	1	n.d.
trans-1,2-Dichloroethene (CAS No.: 156-60-5)	mg/kg	With reference to US EPA 5021 method. Analysis was performed by GC/MS.	1	n.d.
trans-1,3-Dichloropropene (CAS No.: 10061-02-6)	mg/kg	With reference to US EPA 5021 method. Analysis was performed by GC/MS.	1	n.d.
Trichloroethylene (CAS No.: 79-01-6)	mg/kg	With reference to US EPA 5021 method. Analysis was performed by GC/MS.	1	n.d.

Note :

1. mg/kg = ppm ; 0.1wt% = 1000ppm
2. n.d. = Not Detected
3. MDL = Method Detection Limit
4. " - " = Not Regulated
5. ** = Qualitative analysis (No Unit)
6. Negative = Undetectable / Positive = Detectable
7. Testing range of asbestos qualitative analysis is from less than 0.1% to 100%. The judgment criterion: asbestos fibers being found is shown as "Positive"; asbestos fibers not being found is shown as "Negative".
8. The sample(s) was/were analyzed on behalf of the applicant as mixing sample in one testing. The above result(s) was/were only given as the informality value.

PFOS Reference Information : POPs - (EU) 757/2010

Outlawing PFOS as substances or preparations in concentrations above 0.001% (10ppm), in semi-finished products or articles or parts at a level above 0.1%(1000ppm), in textiles or other coated materials above 1µg/m².

Test Report

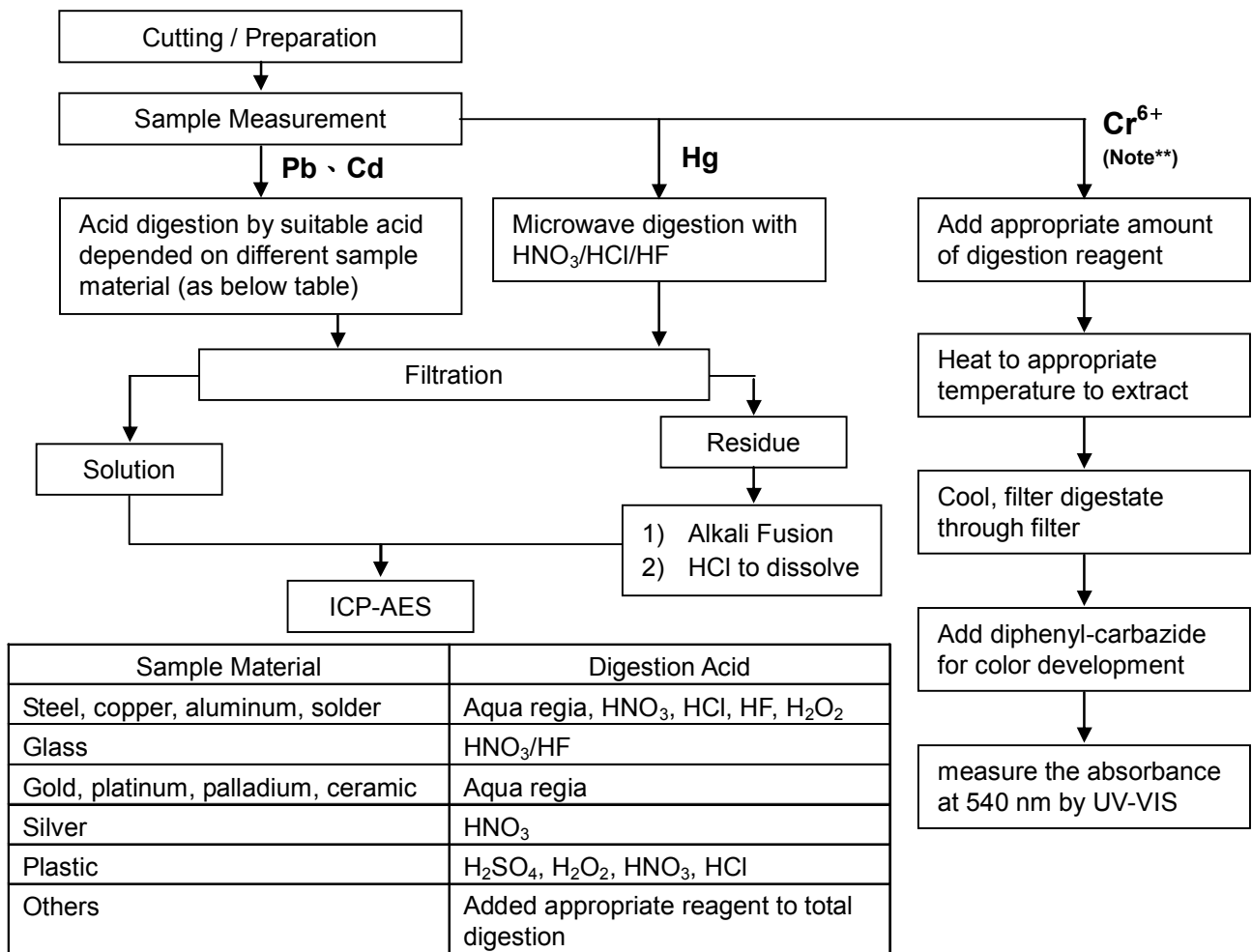
No. : CE/2013/37305B Date : 2013/04/19 Page : 15 of 27

TXC CORPORATION

4F, NO. 16, SEC. 2, CHUNG YANG S. RD., PEITOU 112, TAIPEI, TAIWAN



- 1) These samples were dissolved totally by pre-conditioning method according to below flow chart.
(Cr⁶⁺ test method excluded)
- 2) Name of the person who made measurement: Climbgreat Yang
- 3) Name of the person in charge of measurement: Troy Chang



Note :** (1) For non-metallic material, add alkaline digestion reagent and heat to 90~95 °C.
(2) For metallic material, add pure water and heat to boiling.

Test Report

No. : CE/2013/37305B Date : 2013/04/19 Page : 16 of 27

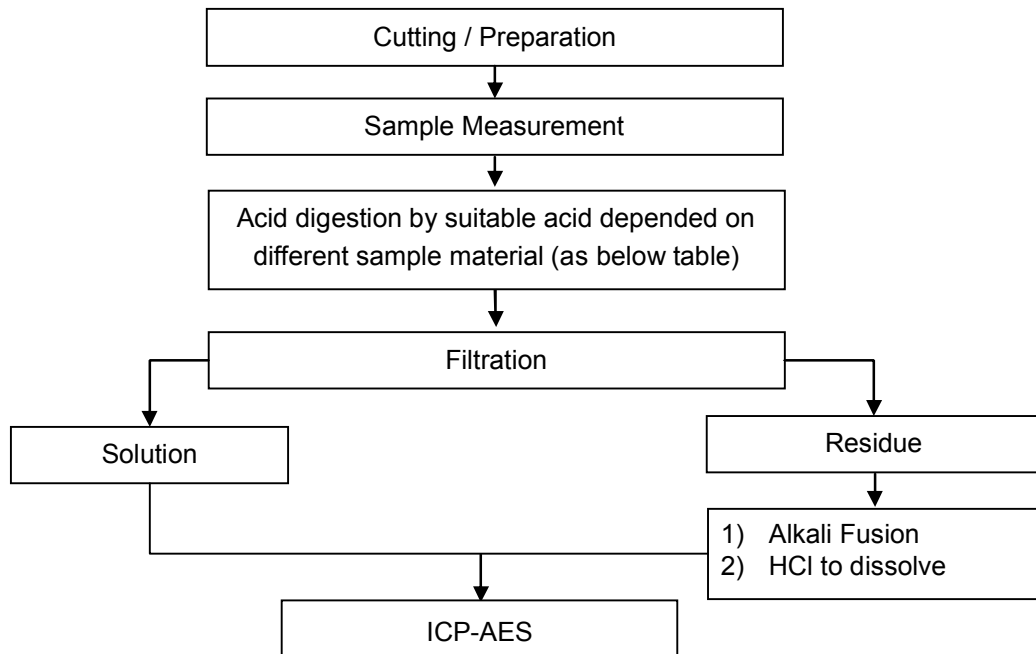
TXC CORPORATION

4F, NO. 16, SEC. 2, CHUNG YANG S. RD., PEITOU 112, TAIPEI, TAIWAN



- 1) These samples were dissolved totally by pre-conditioning method according to below flow chart.
- 2) Name of the person who made measurement: Climbgreat Yang
- 3) Name of the person in charge of measurement: Troy Chang

Flow Chart of digestion for the elements analysis performed by ICP-AES

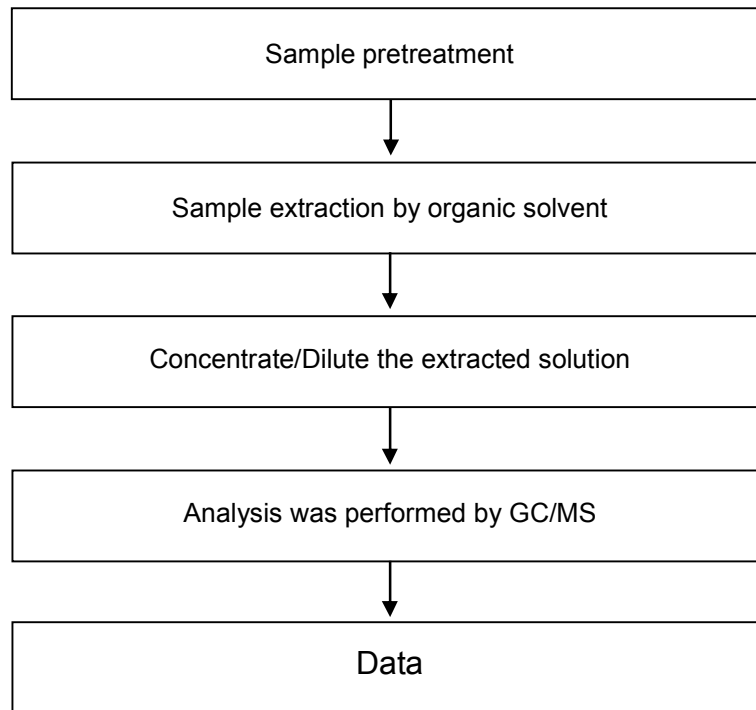


Steel, copper, aluminum, solder	Aqua regia, HNO ₃ , HCl, HF, H ₂ O ₂
Glass	HNO ₃ /HF
Gold, platinum, palladium, ceramic	Aqua regia
Silver	HNO ₃
Plastic	H ₂ SO ₄ , H ₂ O ₂ , HNO ₃ , HCl
Others	Added appropriate reagent to total digestion



Chlorinated Flame retardant analytical flow chart

- 1) Name of the person who made measurement: Barry Tseng
- 2) Name of the person in charge of measurement: Troy Chang
 - Reference method: US EPA 8270D, US EPA 3540C
 - Test Items: PCBs, PCNs, PCTs, CP

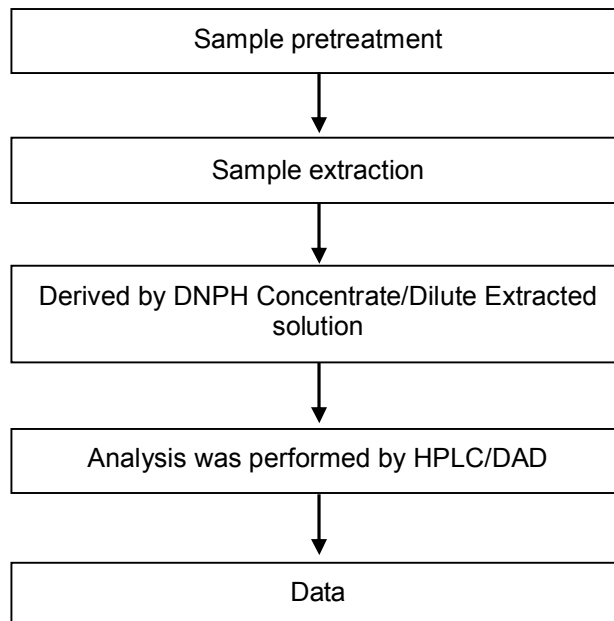




Formaldehyde analytical flow chart

- Name of the person who made measurement: Ginny Chen
- Name of the person in charge of measurement: Troy Chang

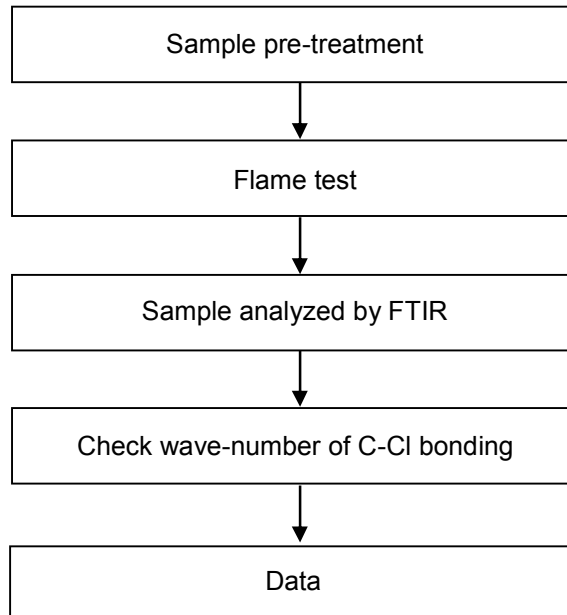
【 Test Method : US EPA 8315A 、 ISO 17226-1 】





Analysis flow chart for determination of PVC in material

- Name of the person who made measurement: Ginny Chen
- Name of the person in charge of measurement: Troy Chang



Test Report

No. : CE/2013/37305B Date : 2013/04/19 Page : 20 of 27

TXC CORPORATION

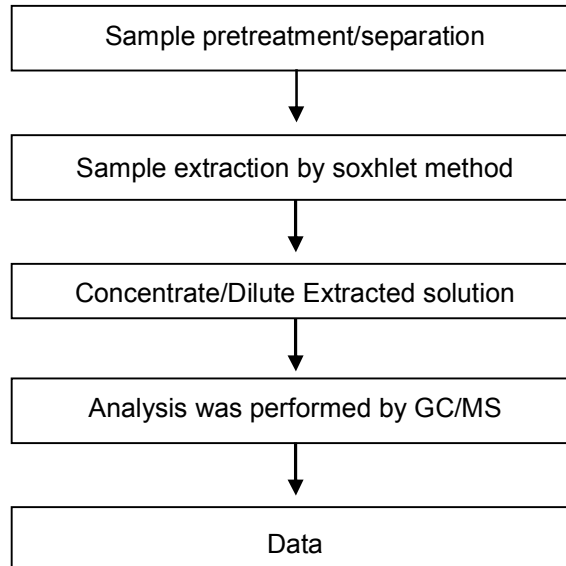
4F, NO. 16, SEC. 2, CHUNG YANG S. RD., PEITOU 112, TAIPEI, TAIWAN



Analytical flow chart of Soxhlet extraction (GC/MS) procedure

- Name of the person who made measurement: Roman Wong
- Name of the person in charge of measurement: Troy Chang

【Test Items: Phthalate、HBCDD】

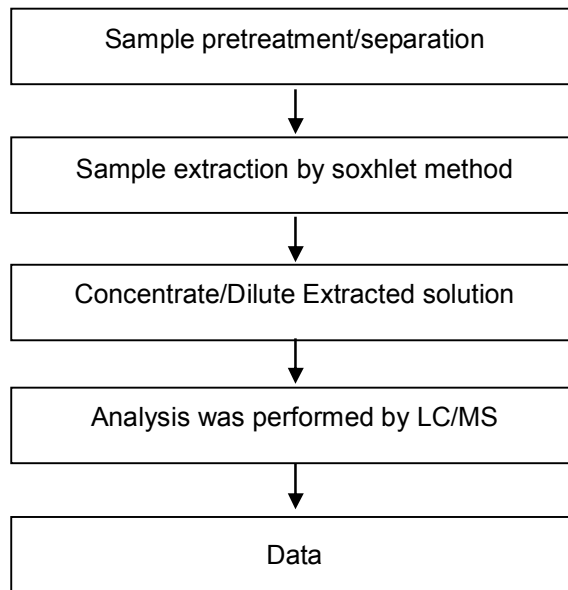


This document is issued by the Company subject to its General Conditions of Service printed overleaf, available on request or accessible at <http://www.sgs.com/en/Terms-and-Conditions.aspx> and, for electronic format documents, subject to Terms and Conditions for Electronic Documents at <http://www.sgs.com/en/Terms-and-Conditions/Termse-Documents.aspx>. Attention is drawn to the limitation of liability, indemnification and jurisdiction issues defined therein. Any holder of this document is advised that information contained hereon reflects the Company's findings at the time of its intervention only and within the limits of client's instruction, if any. The Company's sole responsibility is to its Client and this document does not exonerate parties to a transaction from exercising all their rights and obligations under the transaction documents. This document cannot be reproduced, except in full, without prior written approval of the Company. Any unauthorized alteration, forgery or falsification of the content or appearance of this document is unlawful and offenders may be prosecuted to the fullest extent of the law. Unless otherwise stated the results shown in this test report refer only to the sample(s) tested.



PFOS/PFOA analytical flow chart of Soxhlet extraction (LC/MS) procedure

- Name of the person who made measurement: Roman Wong
- Name of the person in charge of measurement: Troy Chang



Test Report

No. : CE/2013/37305B Date : 2013/04/19 Page : 22 of 27

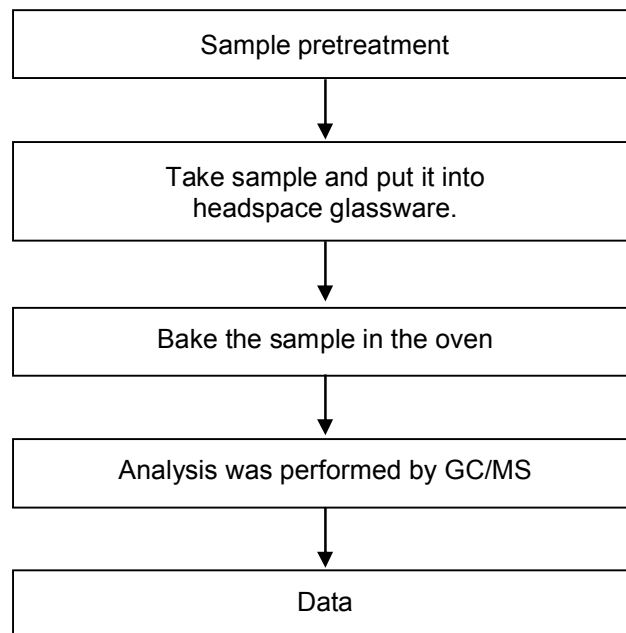
TXC CORPORATION

4F, NO. 16, SEC. 2, CHUNG YANG S. RD., PEITOU 112, TAIPEI, TAIWAN



Analytical flow chart of volatile organic compounds (VOCs)

- Name of the person who made measurement : Chun Wu
 - Name of the person in charge of measurement : Shinjyh Chen
- 【 Reference method : US EPA 5021 】



This document is issued by the Company subject to its General Conditions of Service printed overleaf, available on request or accessible at <http://www.sgs.com/en/Terms-and-Conditions.aspx> and, for electronic format documents, subject to Terms and Conditions for Electronic Documents at <http://www.sgs.com/en/Terms-and-Conditions/Termse-Document.aspx>. Attention is drawn to the limitation of liability, indemnification and jurisdiction issues defined therein. Any holder of this document is advised that information contained hereon reflects the Company's findings at the time of its intervention only and within the limits of client's instruction, if any. The Company's sole responsibility is to its Client and this document does not exonerate parties to a transaction from exercising all their rights and obligations under the transaction documents. This document cannot be reproduced, except in full, without prior written approval of the Company. Any unauthorized alteration, forgery or falsification of the content or appearance of this document is unlawful and offenders may be prosecuted to the fullest extent of the law. Unless otherwise stated the results shown in this test report refer only to the sample(s) tested.

Test Report

No. : CE/2013/37305B Date : 2013/04/19 Page : 23 of 27

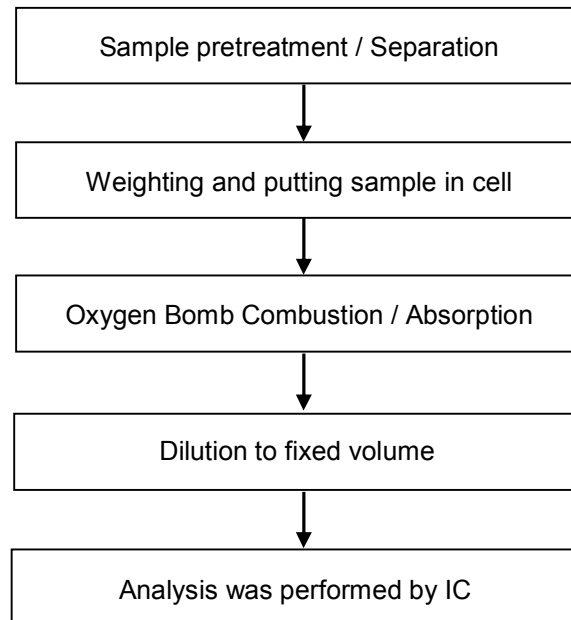
TXC CORPORATION

4F, NO. 16, SEC. 2, CHUNG YANG S. RD., PEITOU 112, TAIPEI, TAIWAN



Analytical flow chart of halogen content

- Name of the person who made measurement: Rita Chen
- Name of the person in charge of measurement: Troy Chang

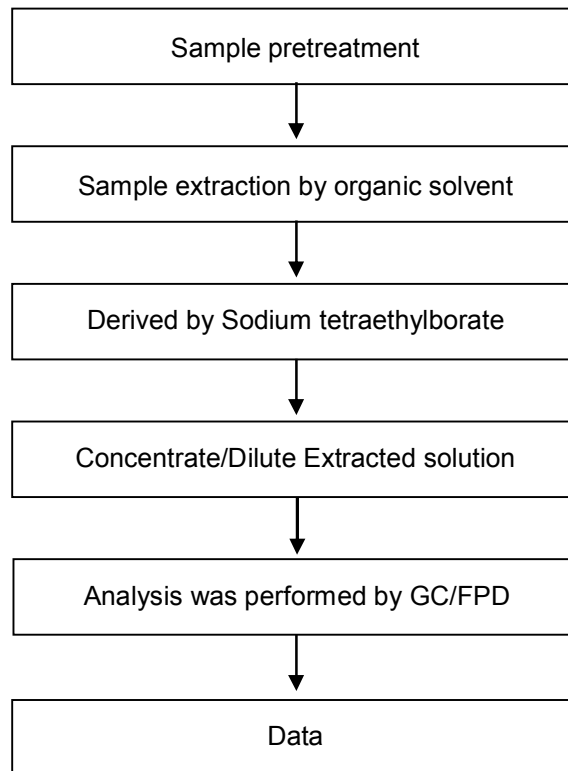


This document is issued by the Company subject to its General Conditions of Service printed overleaf, available on request or accessible at <http://www.sgs.com/en/Terms-and-Conditions.aspx> and, for electronic format documents, subject to Terms and Conditions for Electronic Documents at <http://www.sgs.com/en/Terms-and-Conditions/Termse-Document.aspx>. Attention is drawn to the limitation of liability, indemnification and jurisdiction issues defined therein. Any holder of this document is advised that information contained hereon reflects the Company's findings at the time of its intervention only and within the limits of client's instruction, if any. The Company's sole responsibility is to its Client and this document does not exonerate parties to a transaction from exercising all their rights and obligations under the transaction documents. This document cannot be reproduced, except in full, without prior written approval of the Company. Any unauthorized alteration, forgery or falsification of the content or appearance of this document is unlawful and offenders may be prosecuted to the fullest extent of the law. Unless otherwise stated the results shown in this test report refer only to the sample(s) tested.



Analytical flow chart of Organic-Tin content

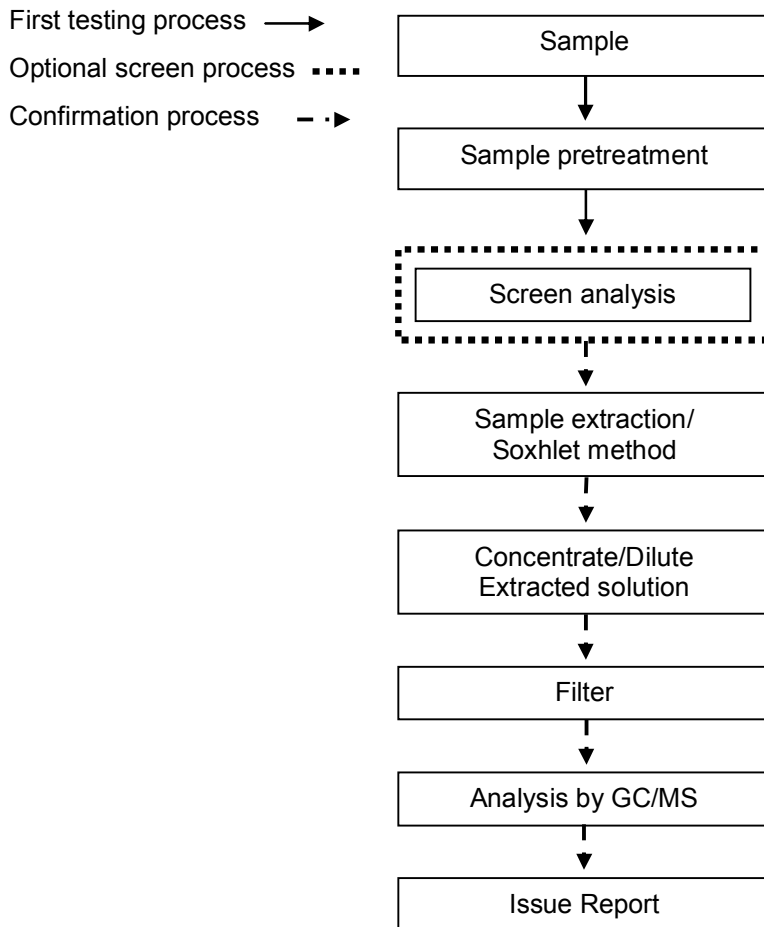
- Name of the person who made measurement: Ginny Chen
- Name of the person in charge of measurement: Troy Chang





PBB/PBDE analytical FLOW CHART

- Name of the person who made measurement: Roman Wong
- Name of the person in charge of measurement: Troy Chang

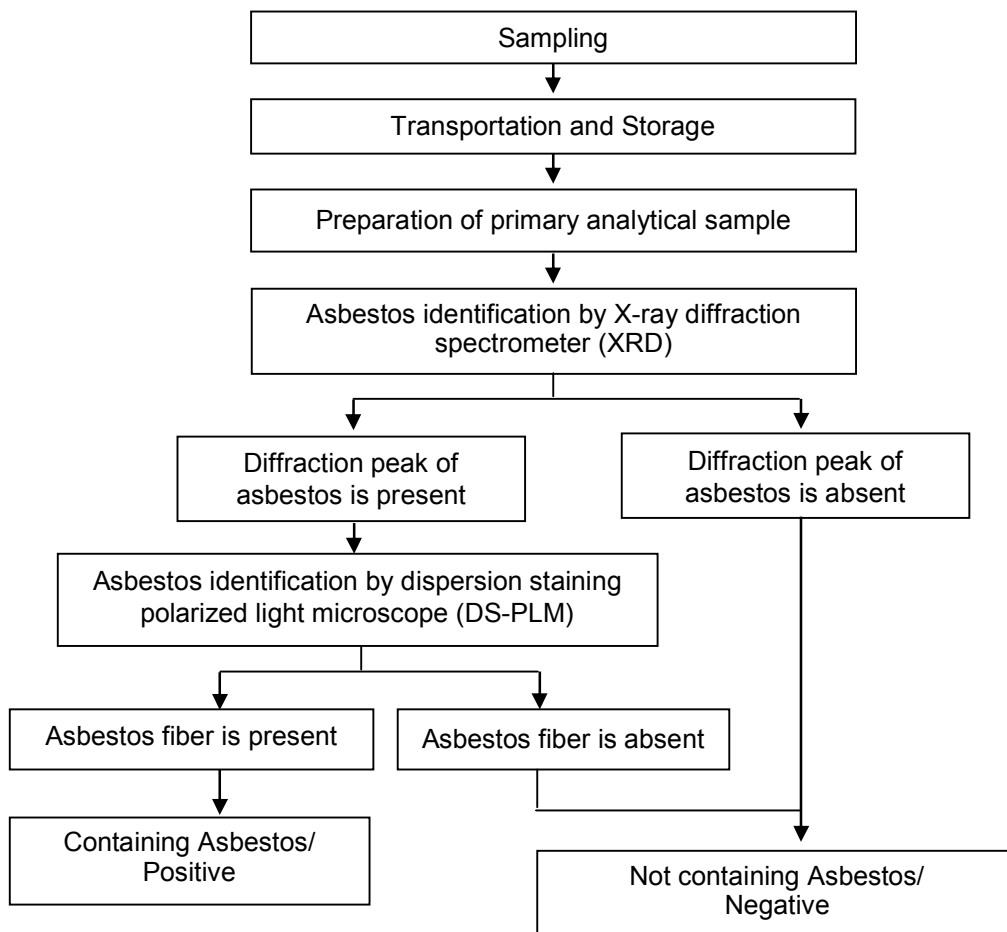


This document is issued by the Company subject to its General Conditions of Service printed overleaf, available on request or accessible at <http://www.sgs.com/en/Terms-and-Conditions.aspx> and, for electronic format documents, subject to Terms and Conditions for Electronic Documents at <http://www.sgs.com/en/Terms-and-Conditions/Termse-Document.aspx>. Attention is drawn to the limitation of liability, indemnification and jurisdiction issues defined therein. Any holder of this document is advised that information contained hereon reflects the Company's findings at the time of its intervention only and within the limits of client's instruction, if any. The Company's sole responsibility is to its Client and this document does not exonerate parties to a transaction from exercising all their rights and obligations under the transaction documents. This document cannot be reproduced, except in full, without prior written approval of the Company. Any unauthorized alteration, forgery or falsification of the content or appearance of this document is unlawful and offenders may be prosecuted to the fullest extent of the law. Unless otherwise stated the results shown in this test report refer only to the sample(s) tested.



Analysis flow chart for determination of Asbestos

- Name of the person who made measurement: Victor Kao
- Name of the person in charge of measurement: Wendy Wei
[Reference method: NIOSH 9000 、 NIOSH 9002]



This document is issued by the Company subject to its General Conditions of Service printed overleaf, available on request or accessible at <http://www.sgs.com/en/Terms-and-Conditions.aspx> and, for electronic format documents, subject to Terms and Conditions for Electronic Documents at <http://www.sgs.com/en/Terms-and-Conditions/Termse-Document.aspx>. Attention is drawn to the limitation of liability, indemnification and jurisdiction issues defined therein. Any holder of this document is advised that information contained hereon reflects the Company's findings at the time of its intervention only and within the limits of client's instruction, if any. The Company's sole responsibility is to its Client and this document does not exonerate parties to a transaction from exercising all their rights and obligations under the transaction documents. This document cannot be reproduced, except in full, without prior written approval of the Company. Any unauthorized alteration, forgery or falsification of the content or appearance of this document is unlawful and offenders may be prosecuted to the fullest extent of the law. Unless otherwise stated the results shown in this test report refer only to the sample(s) tested.

Test Report

No. : CE/2013/37305B Date : 2013/04/19 Page : 27 of 27

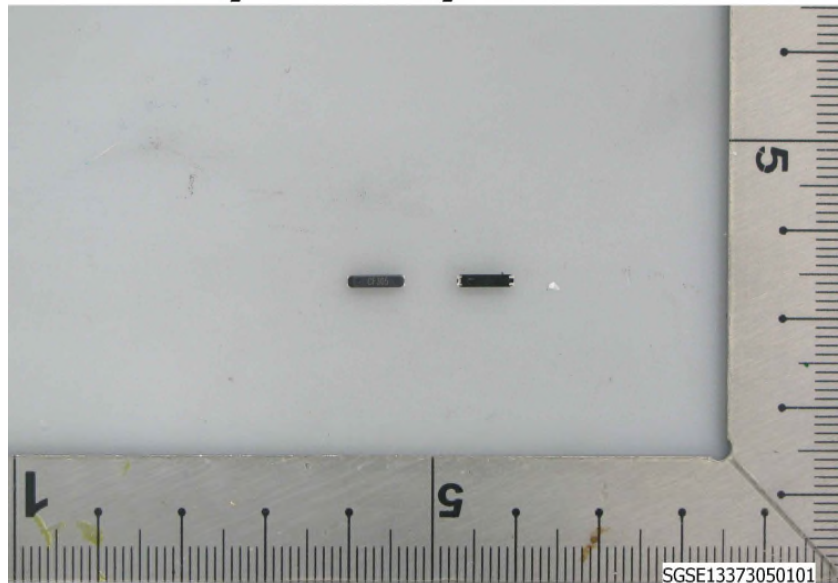
TXC CORPORATION

4F, NO. 16, SEC. 2, CHUNG YANG S. RD., PEITOU 112, TAIPEI, TAIWAN



* The tested sample / part is marked by an arrow if it's shown on the photo. *

CE/2013/37305



** End of Report **

This document is issued by the Company subject to its General Conditions of Service printed overleaf, available on request or accessible at <http://www.sgs.com/en/Terms-and-Conditions.aspx> and, for electronic format documents, subject to Terms and Conditions for Electronic Documents at <http://www.sgs.com/en/Terms-and-Conditions/Termse-Document.aspx>. Attention is drawn to the limitation of liability, indemnification and jurisdiction issues defined therein. Any holder of this document is advised that information contained hereon reflects the Company's findings at the time of its intervention only and within the limits of client's instruction, if any. The Company's sole responsibility is to its Client and this document does not exonerate parties to a transaction from exercising all their rights and obligations under the transaction documents. This document cannot be reproduced, except in full, without prior written approval of the Company. Any unauthorized alteration, forgery or falsification of the content or appearance of this document is unlawful and offenders may be prosecuted to the fullest extent of the law. Unless otherwise stated the results shown in this test report refer only to the sample(s) tested.